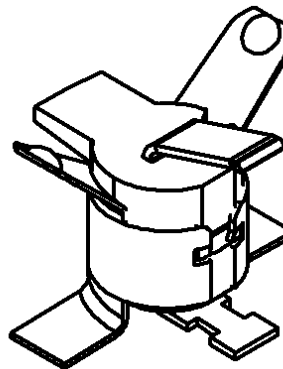
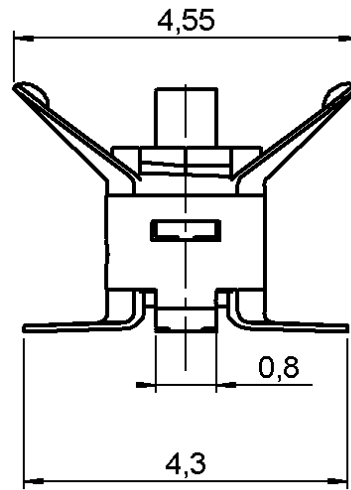
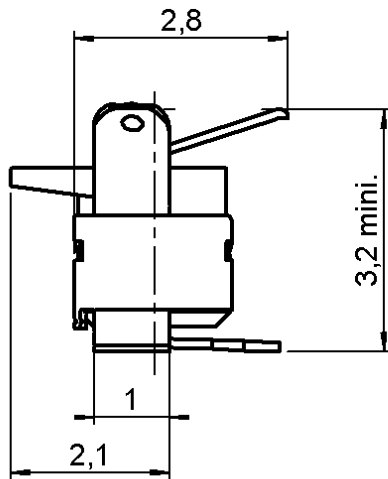



SMT BOARD TO BOARD ADAPTOR H3

R107.064.900

REEL OF 2500

Series : IMP




Scale : 1/1

All dimensions are in mm.



COMPONENTS	MATERIALS	PLATING (µm)
BODY	BERYLLIUM COPPER	GOLD 0.5 OVER NICKEL 2
CENTER CONTACT	BERYLLIUM COPPER	GOLD 0.5 OVER NICKEL 2
OUTER CONTACT	BERYLLIUM COPPER	GOLD 0.5 OVER NICKEL 2
INSULATOR	POLYETHER ETHERCETONE 30% GF	
GASKET	-	-
OTHERS PARTS	-	-
-	-	-
-	-	-

Issue : 0721 B

In the effort to improve our products, we reserve the right to make changes judged to be necessary.



SMT BOARD TO BOARD ADAPTOR H3

R107.064.900

REEL OF 2500

Series : IMP

PACKAGING

SPECIFICATION

Standard	Unit	Other
2500	R107.064.920W	Contact us

ELECTRICAL CHARACTERISTICS

ENVIRONMENTAL

Impedance	50	Ω
Frequency	0-6	GHz
VSWR	1.10 + 0,0300	x F(GHz) Maxi
Insertion loss	0.2	$\sqrt{F(GHz)}$ dB Maxi
RF leakage	- (- F(GHz)) dB Maxi
Voltage rating	100	Veff Maxi
Dielectric withstanding voltage	350	Veff mini
Insulation resistance	3000	M Ω mini

Operating temperature	-40/+90	$^{\circ}$ C
Hermetic seal		Atm.cm3/s
Panel leakage		

OTHER CHARACTERISTICS

Assembly instruction

Others :
Weight reel : 365 g

MECHANICAL CHARACTERISTICS

Center contact retention		
Axial force – Mating end		N mini
Axial force – Opposite end		N mini
Torque		N.cm mini
Recommended torque		
Mating		N.cm
Panel nut		N.cm
Mating life	20	Cycles mini
Weight	0,0200	g

Issue : 0721 B

In the effort to improve our products, we reserve the right to make changes judged to be necessary.



SMT BOARD TO BOARD ADAPTOR H3

R107.064.900

REEL OF 2500

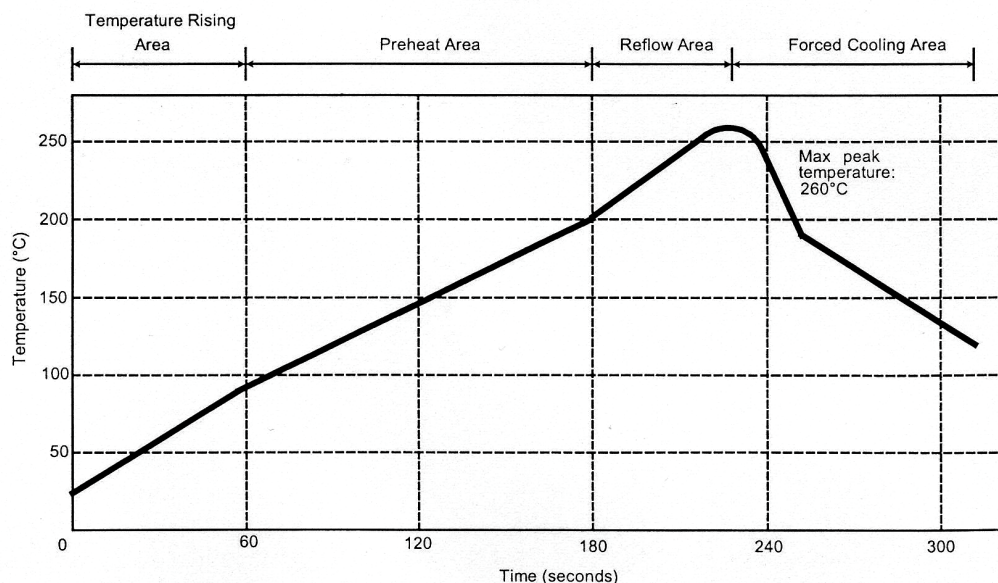
Series : IMP

SOLDER PROCEDURE

1. Deposit solder paste 'Sn Ag4 Cu0.5' on mounting zone by screen printing application.
We recommend a low residue flux.
We advise a thickness of 150 micromm (5.850 microinch). Verify that the edges of the zone are clean.
2. Placement of the receptacle on the mounting zone with an automatic machine of 'pick and place' type.
A video camera is recommended for positioning of the component .
Adhesive agents must not be used on the receptacle.
3. This process of soldering has been tested with convection oven .
Below please find , the typical profile to use.
4. The cleaning of printed circuit boards is not obliged .
5. Verification of solder joints and position of the component by visual inspection.

NOTE : The receptacle and the plug must not be mated before completion of this procedure

TEMPERATURE PROFILE



Parmeter	Value	Unit
Temperature rising Area	1 - 4	°C/sec
Max Peak Temperature	260	°C
Max dwell time @260°C	10	sec
Min dwell time @235°C	20	sec
Max dwell time @235°C	60	sec
Temperature drop in cooling Area	-1 to - 4	°C/sec
Max dwell time above 100°C	420	sec

Issue : 0721 B

In the effort to improve our products, we reserve the right to make changes judged to be necessary.



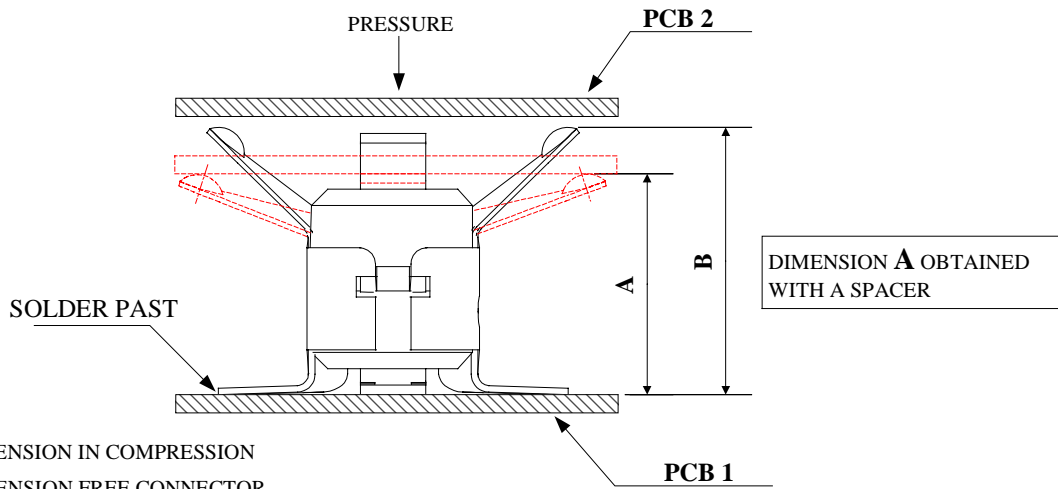
SMT BOARD TO BOARD ADAPTOR H3

R107.064.900

REEL OF 2500

Series : IMP

IMP-SERIES-INFORMATION



A : DIMENSION IN COMPRESSION
B : DIMENSION FREE CONNECTOR

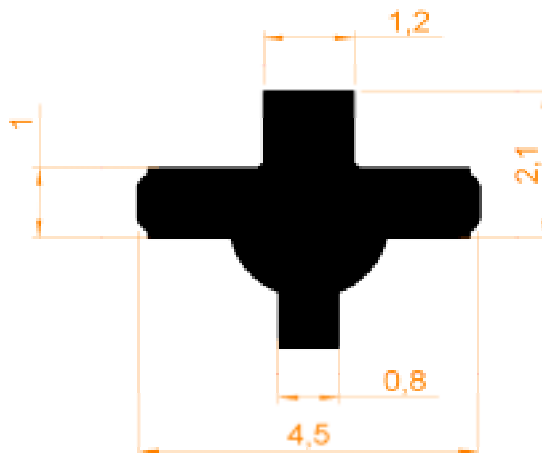
ELASTICITY
TABLE OF CORRESPONDENCE

A CONNECTOR COMPRESSION ALLOWABLE (Dimension obtained in compression)	B PRODUCT DIMENSION AFTER COMPRESSION (Dimension obtained after elastic return)
3.1 mm	3.20 mm mini
3 mm	3.15 mm mini
2.9 mm	3.10 mm mini
2.8 mm	3.05 mm mini
2.7 mm	3.00 mm mini

THE CONNECTOR IS NOT A SPACER, SO DIMENSION A MUST BE ENSURED WITH AN ADDED PIECE PART SETTED 10 mm MAX. FAR FROM THE IMP CONNECTOR.

SHADOW OF IMP RECEPTACLE
FOR VIDEO CAMERA

All dimensions are in mm.



Issue : 0721 B

In the effort to improve our products, we reserve the right to make changes judged to be necessary.



SMT BOARD TO BOARD ADAPTOR H3

R107.064.900

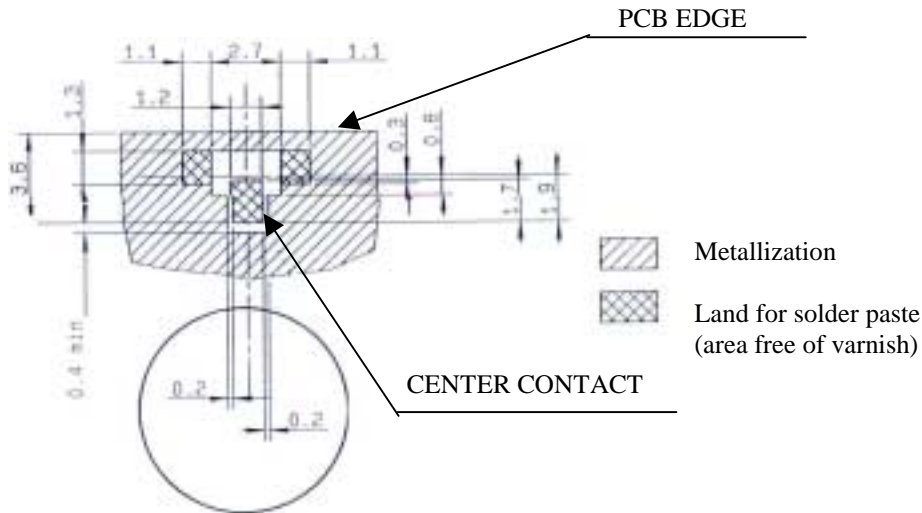
REEL OF 2500

Series : IMP

IMP SERIES INFORMATION

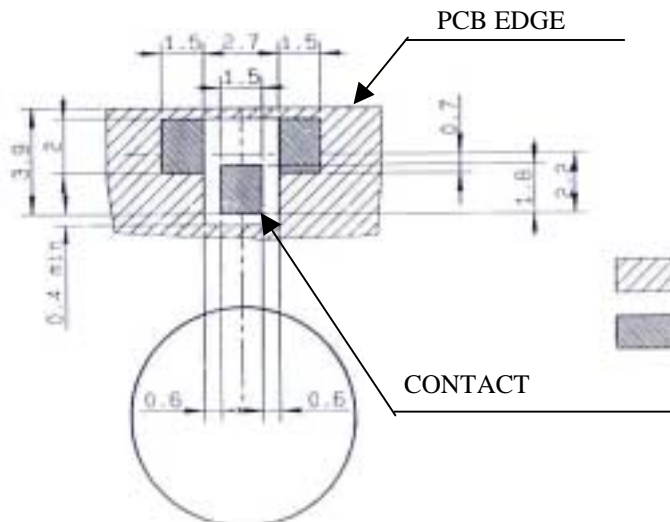
PCB 1

All dimension are in mm



Vias and transmission line inside PCB are not represented.
The impedance of the transmission line should be 50 ohms

PCB 2



Vias and transmission line inside PCB are not represented.
The impedance of the transmission line should be 50 ohms

Issue : 0721 B

In the effort to improve our products, we reserve the right to make changes judged to be necessary.



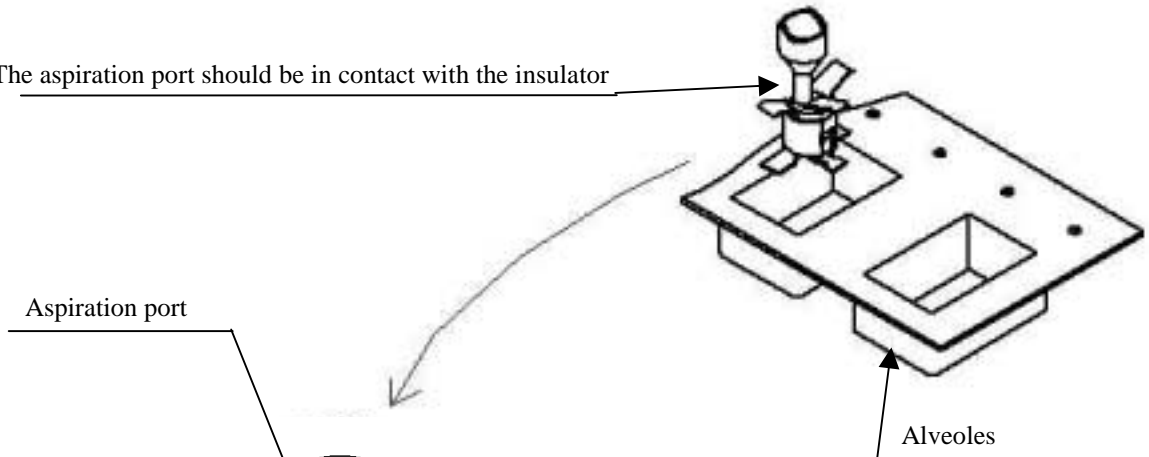
SMT BOARD TO BOARD ADAPTOR H3

R107.064.900

REEL OF 2500

Series : IMP

The aspiration port should be in contact with the insulator

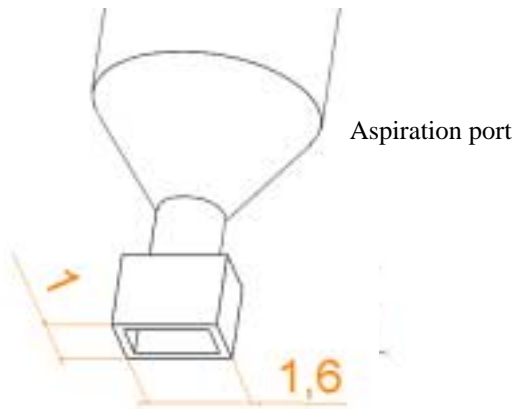


Aspiration port

Connector

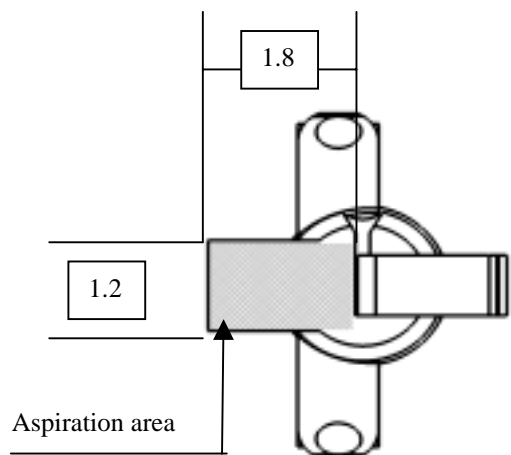
Pcb

Alveoles



Aspiration port

1.6



1.2

1.8

Aspiration area

Issue : 0721 B

In the effort to improve our products, we reserve the right to make changes judged to be necessary.



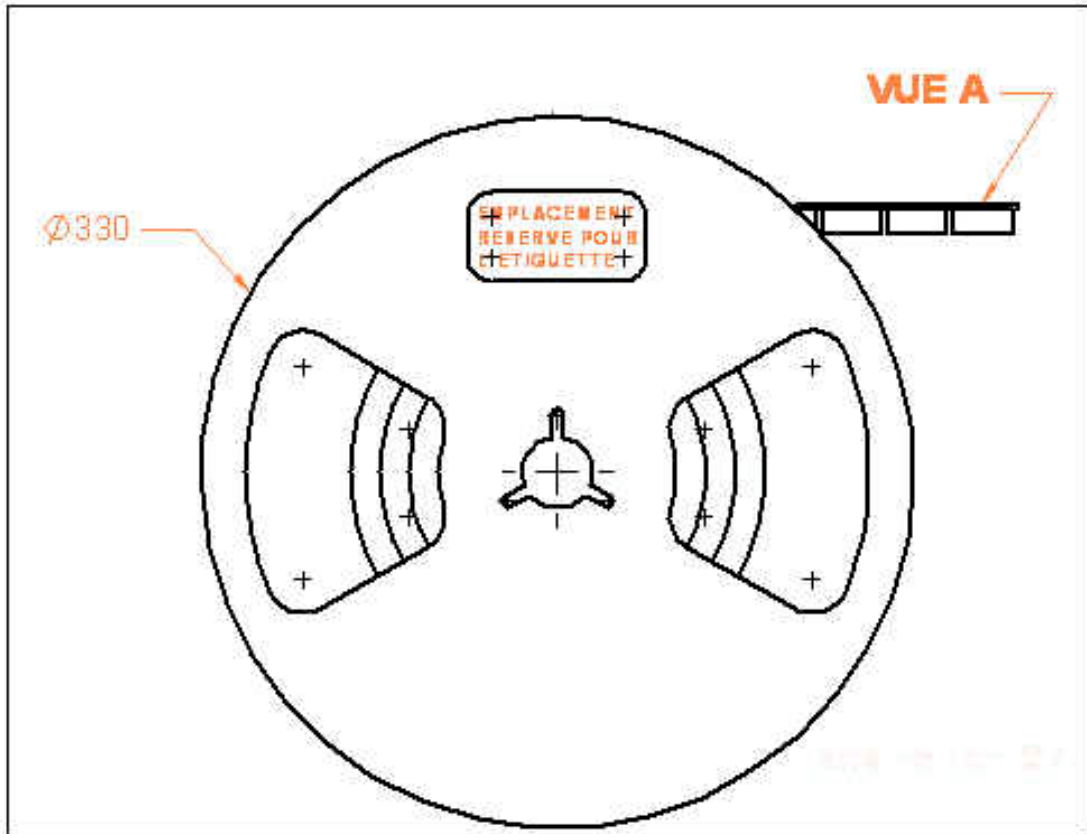
SMT BOARD TO BOARD ADAPTOR H3

R107.064.900

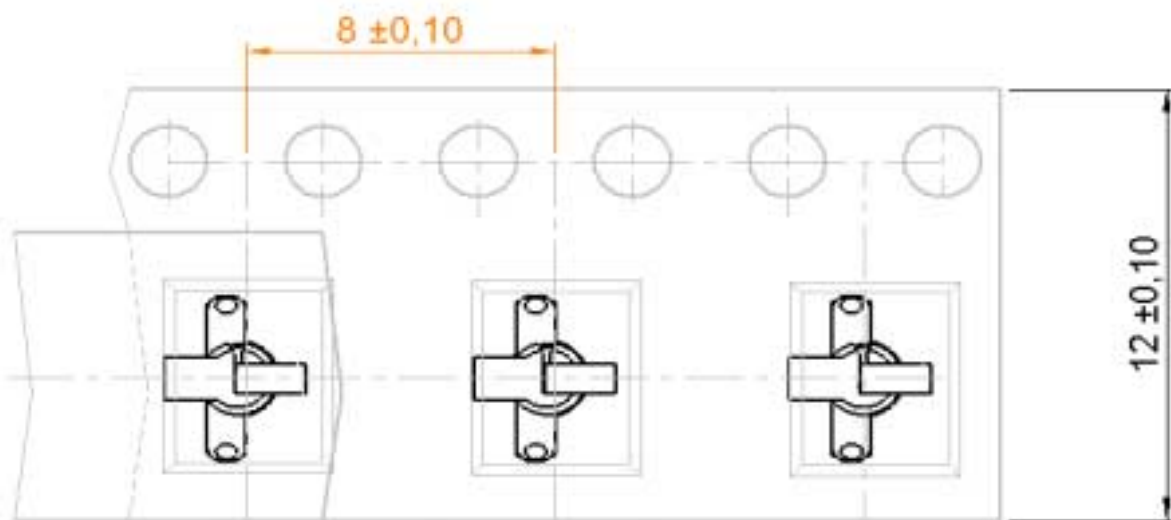
REEL OF 2500

Series : IMP

IMP SERIES INFORMATION



CONNECTOR
OUTLINE VIEW ONLY



Issue : 0721 B

In the effort to improve our products, we reserve the right to make changes judged to be necessary.

